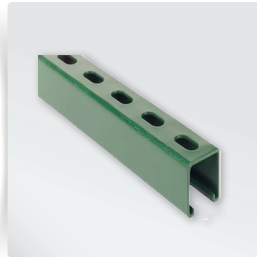


STRUT | GREEN ELONGATED HOLES



Part #	Model #	Description (Size)	Master Carton Qty	MAKE SELECTION BELOW
STRUT, GREEN ELONGATED HOLES				
H22220	HPGS1581012	1 5/8" x 1 5/8" x 10' 12G GREEN HALF SLOT STRUT	500'	<input type="checkbox"/>
H22231	HPGS1582012	1 5/8" x 1 5/8" x 20' 12G GREEN HALF SLOT STRUT	500'	<input type="checkbox"/>
H22221	HPGS1581014	1 5/8" x 1 5/8" x 10' 14G GREEN HALF SLOT STRUT	500'	<input type="checkbox"/>
H22222	HPGS1582014	1 5/8" x 1 5/8" x 20' 14G GREEN HALF SLOT STRUT	500'	<input type="checkbox"/>
H22223	HPGS13161014	1 3/16" x 1 5/8" x 10' 14G GREEN HALF SLOT STRUT	500'	<input type="checkbox"/>
H22224	HPGS13162014	1 3/16" x 1 5/8" x 20' 14G GREEN HALF SLOT STRUT	500'	<input type="checkbox"/>

GENERAL: Strut Channels are manufactured by Roll-Forming strip steel into channel configurations.

MATERIAL: COLD ROLL | ASTM A-366
 PRE-GALVANIZED | ASTM A-653
 HOT-ROLL | ASTM A-569
 (Meets the physical requirements of Grade 33)

DESIGN: Design tables are based on AISI "Specification for the Design of Cold-Formed Steel Structural Member."

WELDING: Channel combinations are made by spot welding or plug welding. Weld spacing is three inches (3") on center.

LOAD REDUCTION: Values in Load Tables should be reduced for fabricated channels. Use 90% of published values for Slotted (SL), Short Slot (SS), Holes (H) and Knock-Out (KO).

SLOT SIZE & SPACING: 9/16" x 1-1/8" - 2" Center Spacing

Manufactured in the USA from steel produced in the USA.

JOB NAME:

JOB LOCATION:

CONTRACTOR:

DATE:

ITEM TAG:

ENGINEER APPROVAL:

DATE:

PART NUMBER: