

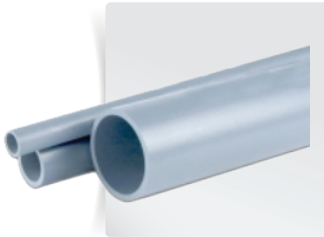


WHEN SPEED & LOGISTICS MATTER.™

SPEC SHEET: SCH80CPVC.1020 EFFECTIVE: 10.15.20

SPECIFICATION SUBMITTAL SHEET

SCH. 80 CPVC PIPE



Model #	Description (Size)	WEIGHT (Per 100')	FEET PER LIFT	MAKE SELECTION BELOW
SCH. 80 CPVC PIPE				
CPVC801220	1/2" x 20'	23.10	5700'	<input type="checkbox"/>
CPVC803420	3/4" x 20'	31.40	5260'	<input type="checkbox"/>
CPVC80120	1" x 20'	46.20	4280'	<input type="checkbox"/>
CPVC8011420	1-1/4" x 20'	63.60	2360'	<input type="checkbox"/>
CPVC8011220	1-1/2" x 20'	77.30	2060'	<input type="checkbox"/>
CPVC80220	2" x 20'	107.10	1660'	<input type="checkbox"/>
CPVC8021220	2-1/2" x 20'	163.10	1080'	<input type="checkbox"/>
CPVC80320	3" x 20'	218.70	840'	<input type="checkbox"/>
CPVC80420	4" x 20'	319.80	520'	<input type="checkbox"/>
CPVC80620	6" x 20'	610.60	340'	<input type="checkbox"/>
CPVC80820	8" x 20'	932.20	220'	<input type="checkbox"/>

- All pipe is plain end 20' length
- Meets ASTM F-441
- Type IV, Grade 1 CPVC 4120 NSF-pw approved
- 40 PSI @ 180°F to 210 PSI @ 180°F
- 160 PSI @ 73°F to 850 PSI @ 73°F

Item	Standard	Notes	Item	Standard	Notes
Material used for pipe	ASTM D1784 "Standard Specification for Rigid Polyvinyl Chloride Compounds and Chlorinated Polyvinyl Chloride Compounds	CPVC Type IV material as defined by ASTM F441. Meet cell class 23447	Product marked NSF-pw	NSF 14, California AB 1953-NSF 61 Annex G (NSF/ANSI 372)	Listed by NSF (listing includes required ASTM product standards), exceeds California lead-free requirement
Material used for pipe	FM4910, UL-94 rating of V-0, 5VB, 5VA	Listed by FM Global	Products marked cNSF-uspw	CSA 137.6	Complies
Material used for Pipe	Corzan®	Manufactured by Lubrizol	Products marked ULC	ULC S102.2-M88	Complies
Products marked NSF-pw or NSF 61	NSF61	Listed by NSF	All product marked "Made in USA" or "USA"	FTC requirements for unqualified marking "Made in USA" and Buy America Act	All Pipe Complies

JOB NAME: _____

JOB LOCATION: _____

CONTRACTOR: _____ DATE: _____

ITEM TAG: _____

ENGINEER APPROVAL: _____ DATE: _____

PART NUMBER: _____