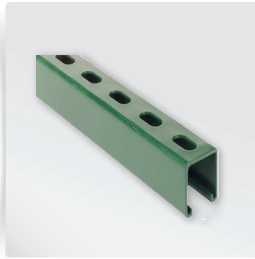


## STRUT | GREEN ELONGATED HOLES

Part #	Model #	Description (Size)	Master Carton Qty	MAKE SELECTION BELOW
<b>STRUT, GREEN ELONGATED HOLES</b>				
H22220	HPGS1581012	1 5/8" x 1 5/8" x 10' 12G GREEN HALF SLOT STRUT	500	<input type="checkbox"/>
H22231	HPGS1582012	1 5/8" x 1 5/8" x 20' 12G GREEN HALF SLOT STRUT	500	<input type="checkbox"/>
H22221	HPGS1581014	1 5/8" x 1 5/8" x 10' 14G GREEN HALF SLOT STRUT	500	<input type="checkbox"/>
H22222	HPGS1582014	1 5/8" x 1 5/8" x 20' 14G GREEN HALF SLOT STRUT	500	<input type="checkbox"/>
H22223	HPGS13161014	1 3/16" x 1 5/8" x 10' 14G GREEN HALF SLOT STRUT	500	<input type="checkbox"/>
H22224	HPGS13162014	1 3/16" x 1 5/8" x 20' 14G GREEN HALF SLOT STRUT	500	<input type="checkbox"/>



**GENERAL:** Strut Channels are manufactured by Roll-Forming strip steel into channel configurations.

**MATERIAL:** COLD ROLL | ASTM A-366  
 PRE-GALVANIZED | ASTM A-653  
 HOT-ROLL | ASTM A-569  
 (Meets the physical requirements of Grade 33)

**DESIGN:** Design tables are based on AISI "Specification for the Design of Cold-Formed Steel Structural Member."

**WELDING:** Channel combinations are made by spot welding or plug welding. Weld spacing is three inches (3") on center.

**LOAD REDUCTION:** Values in Load Tables should be reduced for fabricated channels. Use 90% of published values for Slotted (SL), Short Slot (SS), Holes (H) and Knock-Out (KO).

**SLOT SIZE & SPACING:** 9/16" x 1-1/8" - 2" Center Spacing

**JOB NAME:**

**JOB LOCATION:**

**CONTRACTOR:**

**DATE:**

**ITEM TAG:**

**ENGINEER APPROVAL:**

**DATE:**

**PART NUMBER:**